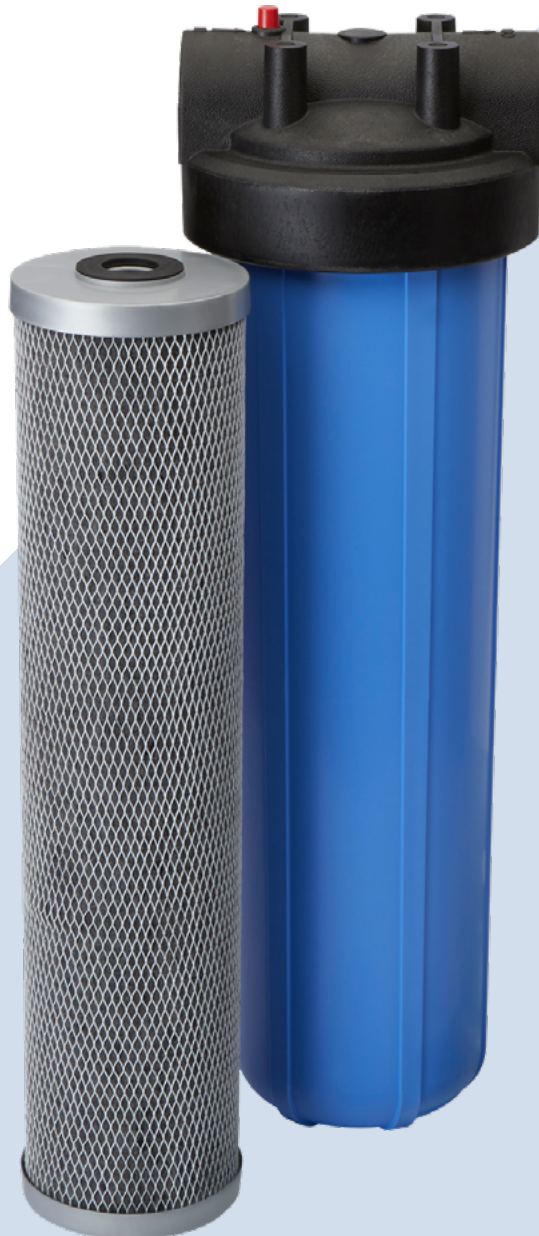
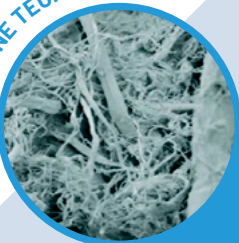


# FLOPLUS PROTECT

PFOA/PFOS FILTRATION



FIBREDYNE TECHNOLOGY



# FLOPLUS PROTECT

## PFOA/PFOS FILTRATION



### Specifications

#### Parts to assemble the system:

Housing Big blue 150253 1½" I/O BSP with pressure relief;  
655230-43 FloPlus Protect cartridge

#### Accessories for installation:

144368 wrench SW-4 for Big blue 20" 150061 bracket with screws

### Features & Benefits

- ▶ Professional grade PFAS reduction system for the whole home
- ▶ System is certified to reduce five PFAS compounds, commonly known as "forever chemicals" up to 99.82%
- ▶ Proprietary Fibredyne™ technology provides high-flow rate with low pressure drop
- ▶ 40,000 gallon capacity at 5 gpm flow rate

### Technical specifications

- ▶ **Housing size** 20"
- ▶ **Inlet size** 1½" BSP
- ▶ **Housing material** Polypropylene
- ▶ **Housing dimensions** 590 mm x 189 mm (23.22" H x 7.45" W)
- ▶ **Cartridge type** Fibredynecarbon block 655230-43 FloPlus Protect cartridge
- ▶ **Cartridge dimensions** 118 mm x 508 mm (4 5/8" x 20")
- ▶ **Micron rating** 1
- ▶ **Approximate filter life\*** 12 months
- ▶ **Capacity** 151 200 liters (40 000 gallons)
- ▶ **Flow rate** 18.9 Lpm (5 gpm)
- ▶ **Temperature range** 4.4 - 37.8°C (40° - 100°F)
- ▶ **Contaminant Reduction** up to 99.8% PFOA, PFOS, PFHxS, PFNA, and PFHpA

\* Filter life dependent on gallon usage and overall incoming water quality.

\* The model FloPlus Protect 20BB, assembly of Big Blue housing 20" 1½" I/O and Flow plus protect housing is tested by IAPMO R&T against NSF/ANSI 53 for the reduction of claims specified on the Performance Data Sheet.

### INSTALLATION TIPS

- ▶ Choose a mounting location suitable to support the full weight of the system when operating.
- ▶ Make sure to properly lubricate O-ring prior to use.
- ▶ Install vertically with bowl hanging down.
- ▶ Allow 2-½" (6.35 cm) clearance below the cartridge for easy cartridge replacement.

### OPERATION TIPS

- ▶ Replace cartridge if flow rate decreases.
- ▶ Do not exceed service flow rate.
- ▶ Inspect O-ring during each cartridge change. Lubricate and/or replace if necessary.

### SIZING

- ▶ Service flow rate: maximum 18.9 L/min.

[www.pentair.eu](http://www.pentair.eu)

All indicated Pentair trademarks and logos are property of Pentair. Third party registered and unregistered trademarks and logos are the property of their respective owners.

MKT-TS-194-EN-B © 2024 Pentair. All rights reserved.